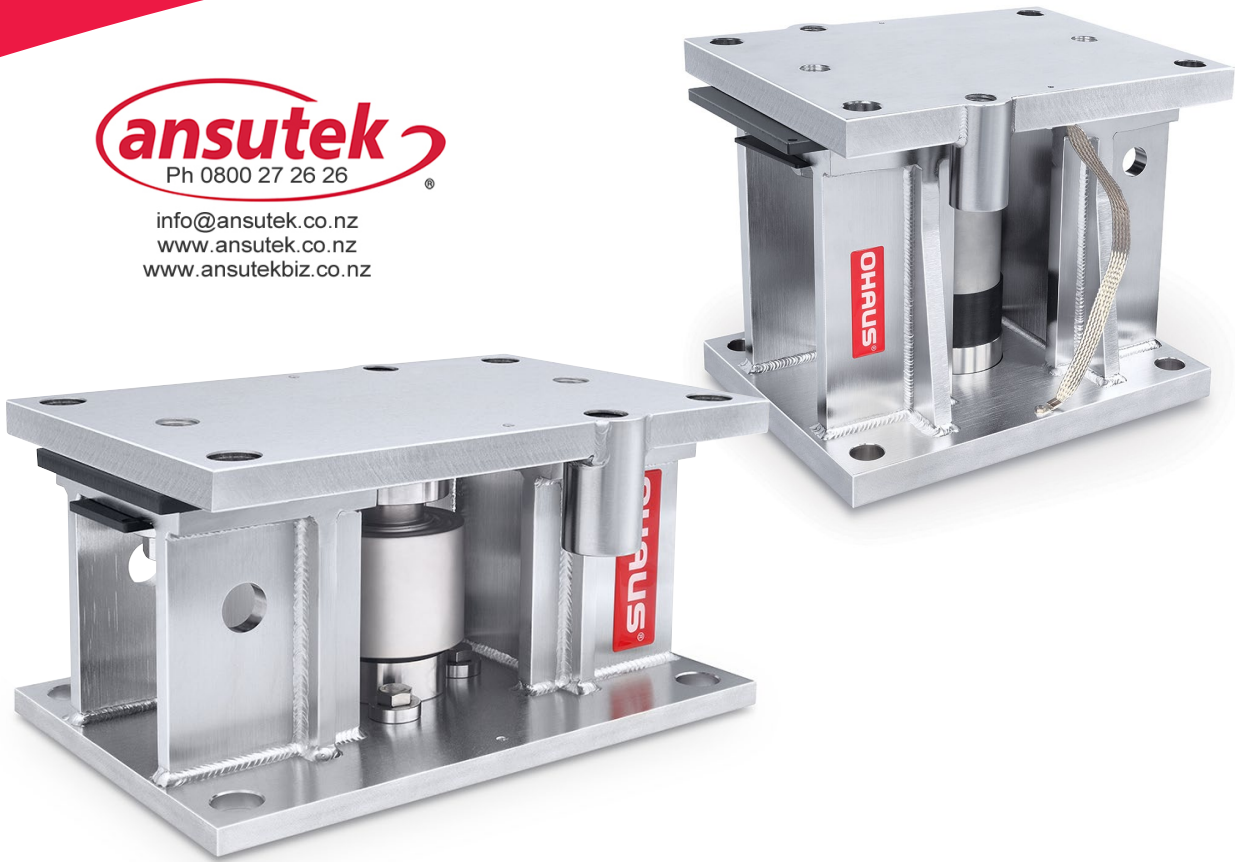




Ph 0800 27 26 26

info@ansutek.co.nz  
www.ansutek.co.nz  
www.ansutekbiz.co.nz



### ***Designed for Static and Dynamic Applications Such as Tank and Vessel Weighing***

Constructed of stainless steel, the i-TMAS Weighing Module is ideal for building industry tanks, coal bunkers, and tanks for liquids and gases. These units come pre-assembled - ensuring ease of installation. Safe, accurate and service-friendly at the same time.

#### ***Unique Features:***

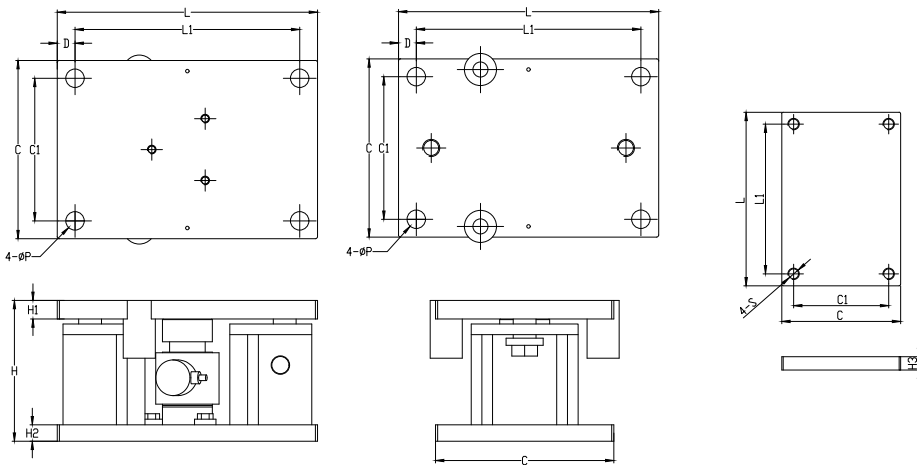
- The load cell as well as the mounting hardware of the i-TMAS weighing modules are constructed of stainless steel making it sanitary and rust-resistant.
- With IP68 hermetic sealing and C3 classification, the self-restoring rocker pin load cell ensures the top plate returns to its optimal position for consistent and precise weight measurements.
- Simple installation options available for weighing module, allowing installation with or without load cell. Effortless maintenance - load cell is easily removable or installable with minimal lifting.

# i-TMAS Weighing Modules

Trooper series	i-TMAS	
Weighing module material	304 stainless steel, Electropolished	
Rated capacity	10t/20t/30t/50t	100t
Load cell model	LBZ7	
Load cell material	Stainless steel, hermetically sealed	
IP Rating	IP68	
Accuracy class	C3	
Maximum number of load cell intervals ( nLC )	3,000	
Ratio of minimum LC verification interval Y= Emax / vmin	10,000	
Combined error (%FS)	≤ ±0.020	
Creep (%FS/30min)	≤ ±0.016	
Temperature effect on sensitivity (%FS/10 °C)	≤ ±0.011	
Temperature effect on zero (%FS/10 °C)	≤ ±0.015	
Output sensitivity (mV/V)	2.0 ±0.002	
Input resistance (Ω)	700 ±7	
Output resistance (Ω)	703 ±4	
Insulation resistance (MΩ)	≥ 5000 (50VDC)	
Zero balance (%FS)	≤ ±1.0	
Compensated temperature (°C)	-10 ~ +40	
Operating temperature (°C)	-35 ~ +70	
Excitation, recommended voltage (V)	5~12 (DC)	
Excitation maximum (V)	18 (DC)	
Safe overload (%FS)	150	
Ultimate overload (%FS)	300	
Cable length	15 m	20m

## Accessories

Mounting Plate Set, TMAS 10-20t SS .....	30904126
Mounting Plate Set, TMAS 50t SS .....	30904127
Mounting Plate Set, TMAS 100t SS .....	30904128
Stabilizer TMAS, 10-50t SS .....	30904133
Stabilizer TMAS, 100t SS .....	30904134



Product Type	Material	Capacity (t)	C	D	L	C1	L1	H	H1	H2	H3	P	S
i-TMAS10T	Electropolished 304 Stainless Steel	10	250	25	365	200	315	182.5	20	14	20	26	M24
i-TMAS20T		20	250	25	365	200	315	182.5	20	14	20	26	M24
i-TMAS30T		30	250	25	365	200	315	197.5	26	23	28	26	M24
i-TMAS50T		50	250	25	365	200	315	197.5	26	23	28	26	M24
i-TMAS100T		100	350	32.5	440	285	375	370	35	35	38	33	M30



info@ansutek.co.nz  
www.ansutek.co.nz  
www.ansutekbiz.co.nz

www.ohaus.com

The management system governing the manufacture of this product is ISO 9001:2015 certified.

